

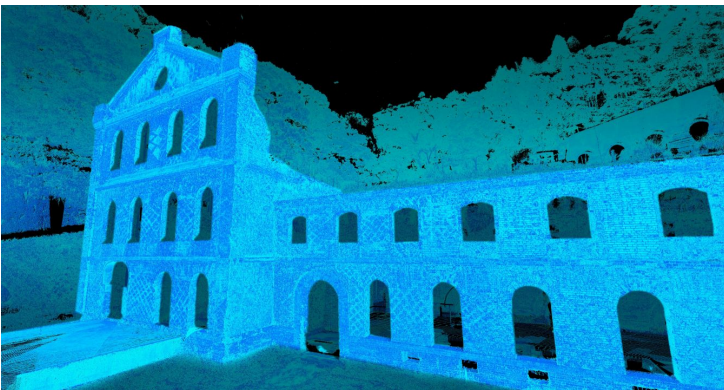
Japan: Sogi hydroelectric plant 3D mapped by CyArk



Sogi site, fieldwork (photo courtesy by CyArk)

The **Sogi hydroelectric plant**, one of **Kagoshima Prefecture's** most alluring historic industrial sites, has been mapped by **CyArk** as part of its **CyArk 500 Challenge**, an **international project to digitally preserve some of the world's most significant cultural heritage sites**.

The Sogi area, considered a significant contribution to the **Meiji Industrial revolution**, has been recorded in **3D** by an international team thanks to the latest geospatial technologies of **Topcon**, the Japanese-based manufacturer of **geopositioning solutions**. Sogi's one is the second Japanese site to enter the **CyArk archive: a free, 3D online library of cultural heritage sites** including among others the statues of Easter Island, Pompeii, ancient Thebes and Mount Rushmore.



Sogi site, scan result (photo courtesy by CyArk)

In the Kagoshima Prefecture industrialisation began in **1852**; here, the Sogi power plant was constructed in **1909**. It is exemplary of **Meiji brickwork architecture** and was originally constructed to support the **Ushio gold mines**. At its height, the hydroelectric plant generated 6,700 kW of power.

With the construction of the **Tsuruda dam** downriver, in **1965**, the Sogi plant closed. The new dam has caused Sogi to flood seasonally, endangering this unique representation from the Meiji industrial revolution.



The Sogi plant was nominated to the CyArk 500 Challenge in **December of 2014**, by the **National Congress of Industrial Heritage** in collaboration with the **Japanese government**. US-based non-profit CyArk joined forces with Topcon and the National Congress to develop a three-dimensional map of the site for future preservation and visualisation, using the latest in **3D capture technologies**, including **laser scanning** and **photographic aerial drones**.

Read [Makenna Murray's article](#)

Find out more about [CyArk 500 Challenge](#)