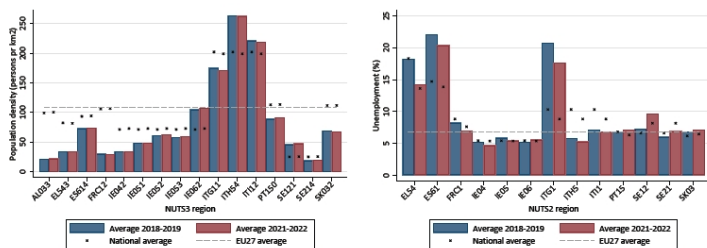
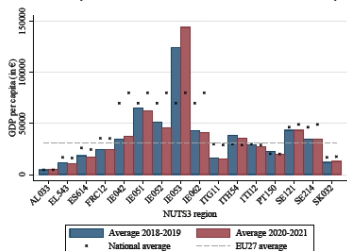


INCULTUM Guidelines on the use of European Structural and Investment Funds



(a) Population density

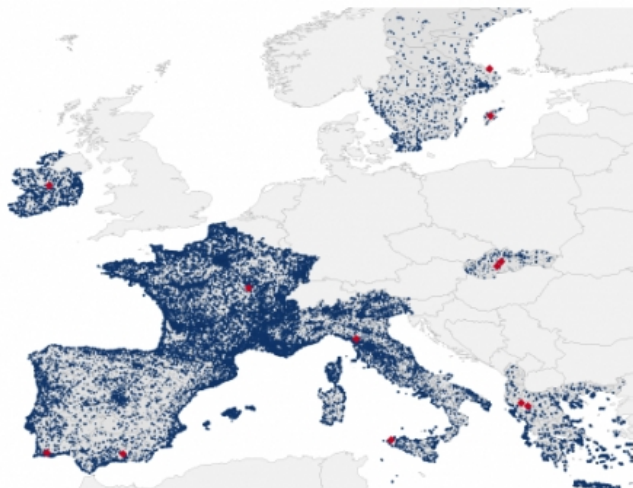
(b) Unemployment rates



(c) GDP per capita

The [INCULTUM project](#) focuses on promoting cultural tourism in Europe's peripheral regions, leveraging European Structural and Investment Funds (ESIF).

These Guidelines analyze the experiences of [INCULTUM pilots](#) with ESIF, providing insights into their application, management, and impact on cultural heritage projects.



Notes: This map shows the approximate location of the INCULTUM pilots (red squares) together with the locations of all attractions in INCULTUM countries (blue dots). Source: Tripadvisor reviews collected in Borowiecki et al. (2023a,b) and INCULTUM Pilots.

The primary aim of this document is to offer a detailed exploration of how ESIF can be effectively utilized for cultural heritage projects. By drawing on the real-world experiences of those directly involved in the INCULTUM project, the report seeks to provide a nuanced understanding of the practical aspects of ESIF application, management, and impact.

The Guidelines aim to serve as a valuable resource for policymakers, practitioners, and stakeholders, guiding them through the complexities of ESIF and demonstrating how these funds can be leveraged to foster the growth and development of cultural tourism in Europe's peripheral regions.

The Guidelines are available for free download from the [INCULTUM Training Portal \(PDF\)](#).